

# HÖRNING®



FLOORS FOR GENERATIONS

# FLOORS FOR GENERATIONS

With quality wood, timeless design and good old-fashioned craftsmanship, Hørning lays the foundation for the sustainable architecture of the future.



**Then as now;**  
A 100-year-old thread of craftsmanship is preserved through just four production managers from the roaring 1920s to the present Hørning.



# A CENTURY WITH DANISH CRAFTSMANSHIP

Ever since the humble beginnings in 1925, the driving force has been the desire to create unique wooden floors for generations of life.

No copies, only respectful processing of nature's most beautiful material in combination with a fundamental desire to create something genuine; something that actually lasts – both functionally and aesthetically. You may call it dedication, we call it Floors for Generations. Because this is exactly how we have protected our Danish production of tailor made floor solutions for the past 100 years. And we will continue to do so for the next century in the spirit of sustainability.

Welcome to Hørning

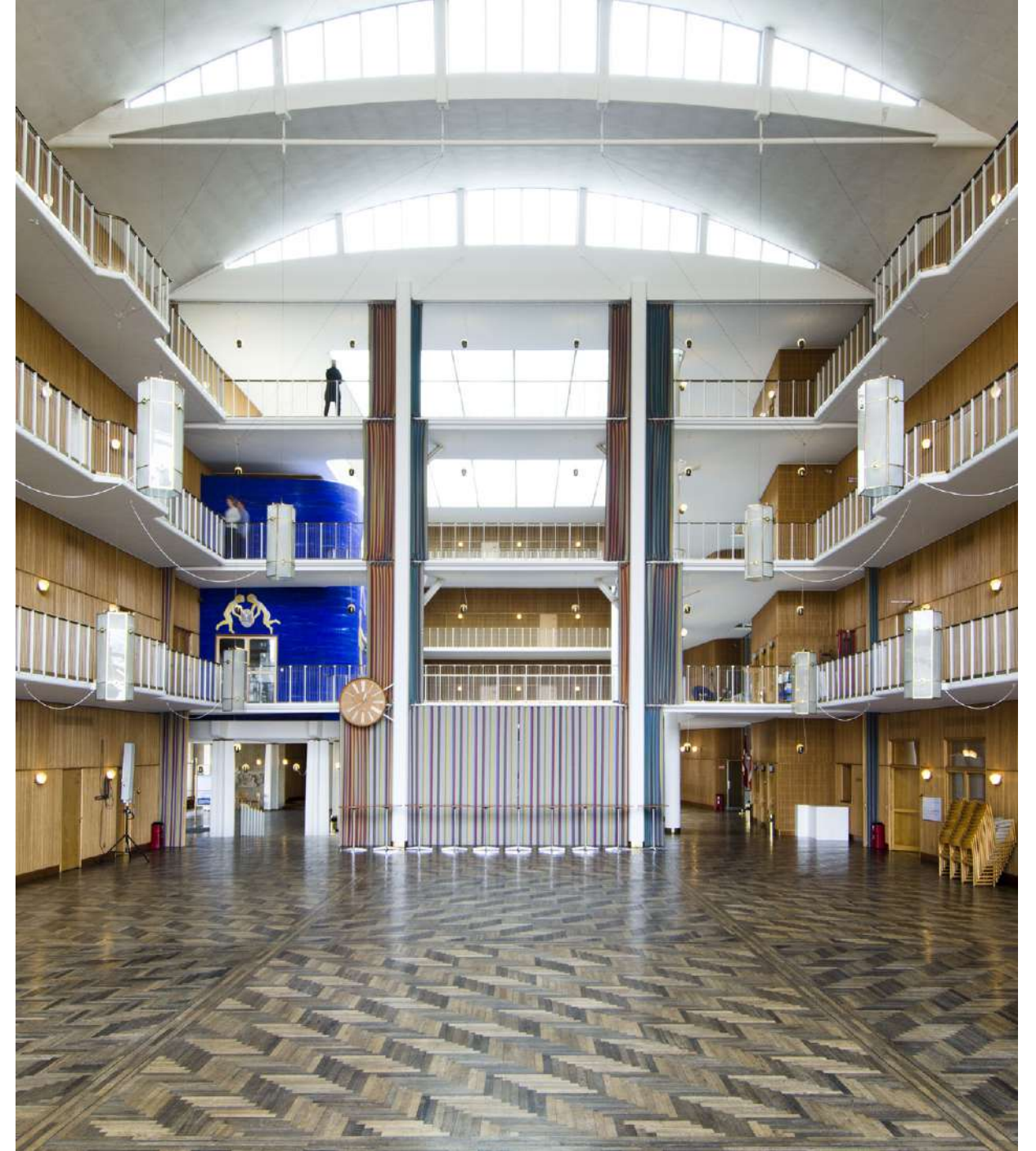


# THE CITY HALL OF AARHUS

Unusually beautiful bog oak from Hørning laid in a spectacular three-dimensional pattern attracts all the attention when you first step over the threshold of the city hall in Aarhus. The iconic building was designed in the late 1930s by Arne Jacobsen, who probably needs no introduction, and is a perfect example of Danish functionalism.



Oak, smoked oak and 7000-year-old bog oak - a unique herringbone installed in a pattern with several lengths.



The three-dimensional pattern elegantly breaks the towering symmetry of the main hall.





# COPENHAGEN AIRPORT

When we say Floors for Generations, we also mean generations of travelers. For more than 60 years, Hørning has provided the solid wood floors for millions of busy guests and trolleys at Copenhagen Airport. The floors have been installed in several stages in line with the expansion of the airport - most recently in 2018 - and now cover 25,000 square meters with solid jatoba, oak, ash and bilinga.





## A CENTURY OF DEDICATION TO WOOD FLOORS

Wood is a living material, which is endowed by nature with fantastic properties that make it ideal as a substrate for the course of life. But it requires both experience, finesse and craftsmanship to enhance the wood's inherent beauty while preserving its natural strength to the full. In all modesty, that is what we do.

Based on the experiences from the city hall in Aarhus, Copenhagen Airport, the Danish National Bank and 100 years of history, a maintained solid wood floor from Hørning is polished and sanded at intervals of up to 25 years in total depending on the area of use. Thus, solid wooden floors from Hørning benevolently add tree rings to the next generations.



# SUSTAINABILITY IS OUR MOST IMPORTANT RAW MATERIAL

Nothing is indestructible. Not even carefully selected quality wood, sourced from certified forestry and treated as what it is: a gift from nature. But when you know at the same time that the result will last for generations, it almost feels that way.





# NO SUSTAINABILITY WITHOUT EVIDENCE

Our solid wooden floors are produced to last for generations, and thus contribute, in combination with well-thought-out architecture, to a more sustainable development. Such claims must of course be documented. We do that with the following.



## EPD (ENVIRONMENTAL PRODUCT DECLARATION)

EPD, or Environmental Product Declaration, is an internationally recognized standard for environmental declaration and describes and documents the environmental impacts of a given building material throughout its life cycle.

In other words, an EPD is a uniform narrative of how much energy has been used, how many resources it has cost and how much waste it has generated to produce the material.

This ensures contractors, builders and architects full transparency regarding our products' environmental impact, including resource consumption, waste generation and CO2 emissions.

### Applicable standards for EPD:

#### EN 15804

Calculation rules and basis for EPDs, published through EPD Denmark, appear from EN 15804:2012+A2:2019 – Sustainability in construction and construction - Environmental product declarations - Basic rules for the product category construction products.

#### ISO 14025

DS/EN ISO 14025:2010 Environmental labels and declarations - Type III environmental product declarations – Principles and procedures describe guidelines for the design of environmental product declarations of the type EPDs fall under. (EPD Denmark has a requirement for 3rd party verification of EPD).

The above are the two most important, but in addition the two basic LCA standards (ISO 14040 and ISO 14044) as well as EN 15942 (communication rules for business-to-business) and the technical guidance CEN/TR 16970 (guidance in the implementation of EN 15804) will follow.



## EUROFINS INDOOR AIR COMFORT GOLD CERTIFICATION

The Eurofins Indoor Air Comfort Gold Certification is a quality assurance of our intern processes and products that are tested and screened for unwanted chemicals.



## FSC® AND PEFC CERTIFICATION

FSC® and PEFC are internationally recognized labeling schemes for responsible forestry according to traceability, environmental, social and economic criteria. We use FSC® and PEFC certified wood where possible. But unfortunately only 1-2% of the world's forests are currently certified under a global environmental scheme. Therefore, the demand is naturally far greater than the supply on the market, which is why we are constantly combing the market for more responsible suppliers of quality wood.



## LEED OG BREEAM

Floor solutions from Hørning contribute, among other things, to earning building points for LEED, DGNB and BREEM certification of buildings. The entire building is certified and not individual products. Products that are included in the building, must meet certain criteria to contribute to the building's overall certification. The different systems are assessed at different levels.



## BYGGVARUBEDÖMNINGEN

A number of the floor solutions and accessories from Hørning are certified according to Bygghvarubedomningen.

Bygghvarubedomningen is an economic association that has developed a system for sustainability assessment of products on the Swedish market. Building materials are assessed based on environmental and health aspects in accordance with Sweden's Construction Industry's indicative construction product declaration. The products can be rated: Avoid, Accepted and Recommended.





# GRADE CLASSIFICATIONS ARE PERSONAL

Solid wood is a natural material. Each piece of wood has its own expression, and each plank from the same piece is as unique as a fingerprint. The different gradings ensure maximum utilization of the raw materials.

The grade classifications are not an expression of fundamental differences in quality, but show the options for the desired expression in the appearance of the floor.

## SELECT

A consistently very uniform interplay of colour and the wood's texture. Growth-related variations occur. In principal free of knots and chips. A minimum of whirls, small scratches and cross grain, chips and brown core may occur depending on the type of wood.

## NATURE

Vibrant appearance with natural interplay of colours and texture. In principal, free of open knots, cracks, pith etc. Whirls, healthy knots, small scratches, cross grains and silicon stains occur. Chips or brown core occur, depending on the type of wood.

## RUSTIC

Very vibrant appearance with all the natural variations and textures. Knots, chips, brown core etc. occur.

## EXQUISIT

A consistently very uniform interplay of colour and the wood's texture. Growth-related variations occur. In principal free of knots and chips. A minimum of whirls, small scratches and cross grain, chips and brown core may occur.

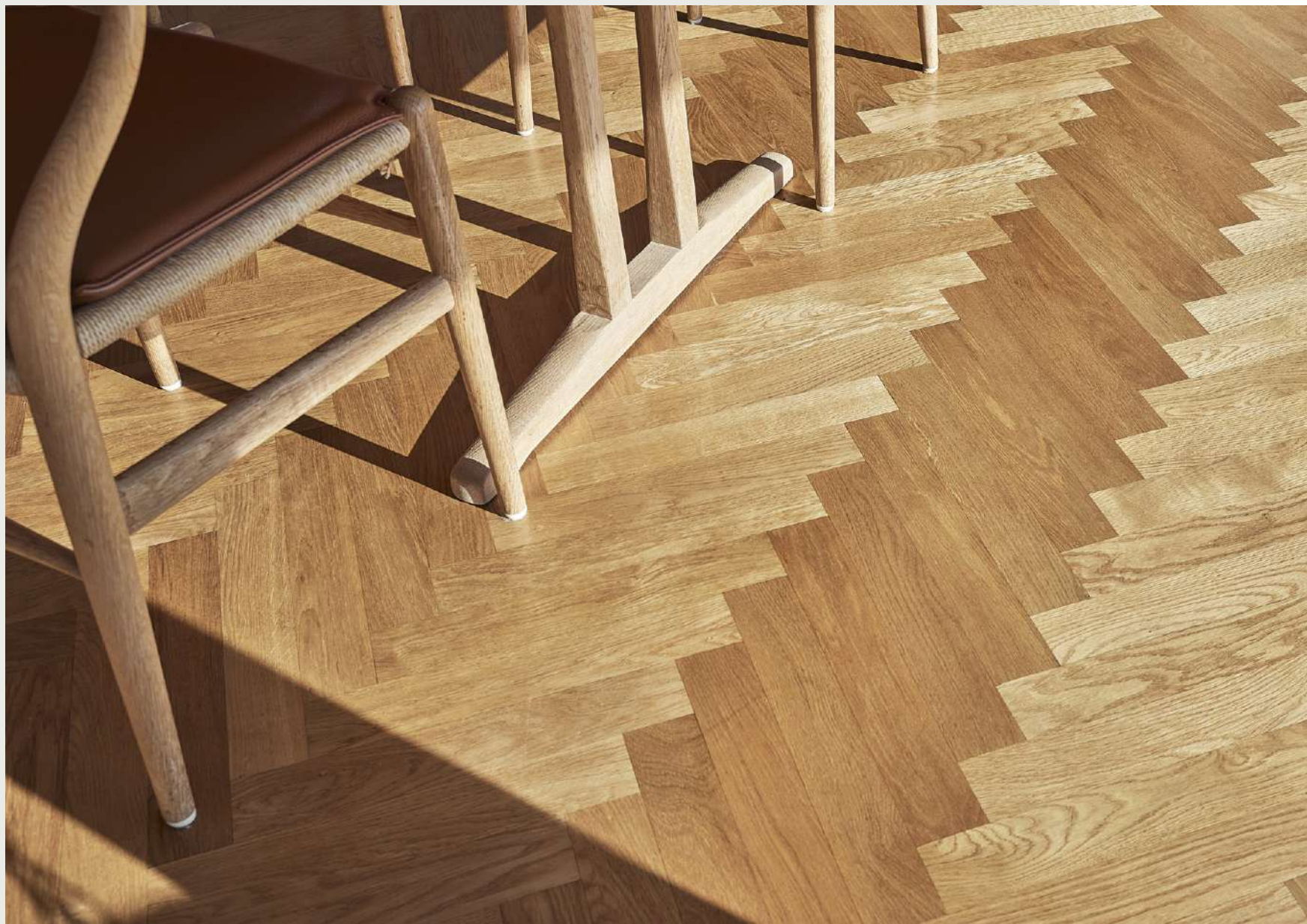
## LIVING

Vibrant appearance with natural interplay of colours and texture. In principal, free of open knots, cracks, pith etc. Whirls, healthy knots, small scratches, cross grains and silicon stains occur. Chips or brown core occur, depending on the type of wood.

## COUNTRY

A very vibrant appearance with all the natural variations in colour and textures. Knots, chips, brown core, filling of knots and cracks occur.





# FORM, FUNCTION AND MATERIAL IN PERFECT BALANCE

Private residence modernized from the ground up with a focal point in the material diversity of the wood and perfectly dosed respect for the original. Here, a solid herringbone parquet is just as beautiful in the kitchen and under the stairs as in the living room.





Elegant, yes, but can the floor withstand the daily wear and tear in a kitchen?  
The short answer is yes.



Floating staircase, concrete wall  
and herringbone with rubber  
joints against the walls,  
minimalism is achieved.



Classic craftsmanship furniture rest beautifully on a perfectly laid  
herringbone floor in the warm glow of an afternoon sun.



A BEAUTIFUL WOOD  
FLOOR EMBRACES  
SUSTAINABILITY  
IN MORE THAN  
ONE SENCE





New, old and elegant on top of a beautiful statement at floor level.

## TIMELESS & ELEGANT DESIGN

The rooms in the newly renovated private residence match beautifully with the classic French herringbone, Chevron. A floor with its distinctive expression and pattern, which unites the historic floor design with the modern trends in today's architecture.



With loving care, Chevron solid oak parquet, in grading class Exquisit with clear oil, also does the job in a kitchen.





The precision craftsmanship is evident in the transition from natural inside the house to nature outside.



Subdued tones and geometric play.



Art watches over the beautiful lounge corner with large velvet sofa on the solid oak parquet.

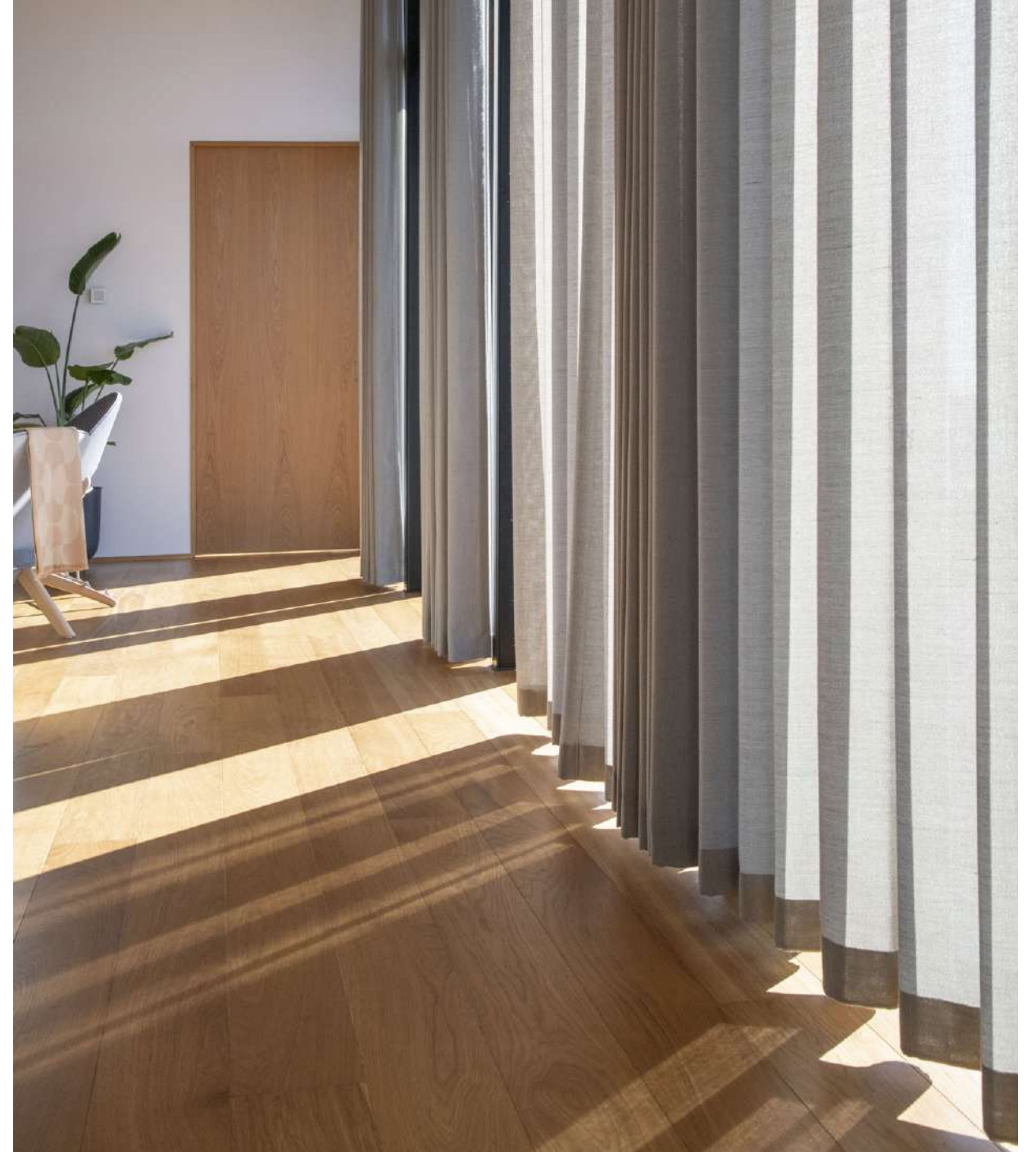


# ARCHITECTURAL PRIVATE RESIDENCE

Well executed functionally designed residence. With an extraordinarily elegant plank floor made of carefully selected materials.



Beautiful view of Castleplank in oak, grade Exquisit with clear oil.



The breaking sunlight illuminates the unique personality of each plank.

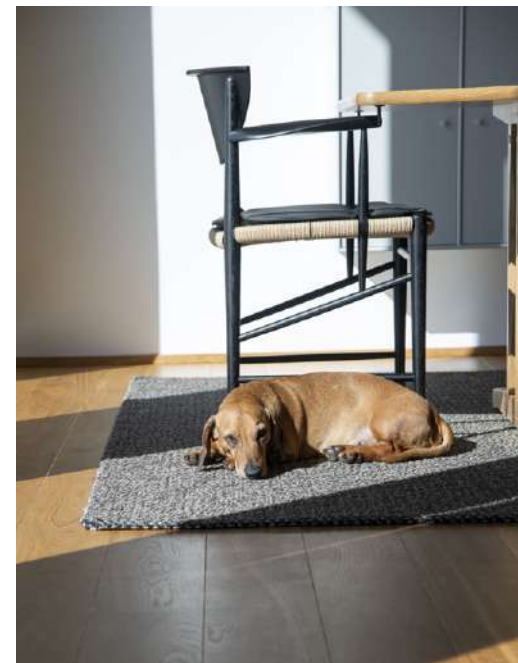




A unique spacious view  
is created through the  
residence with different  
levels of wood and stone.



The long planks tie the spaces in the room together.



A perfect spot in the sun for  
the humans best friend.





The architect's choice? Wide and white oiled Douglas planks in Living grade.

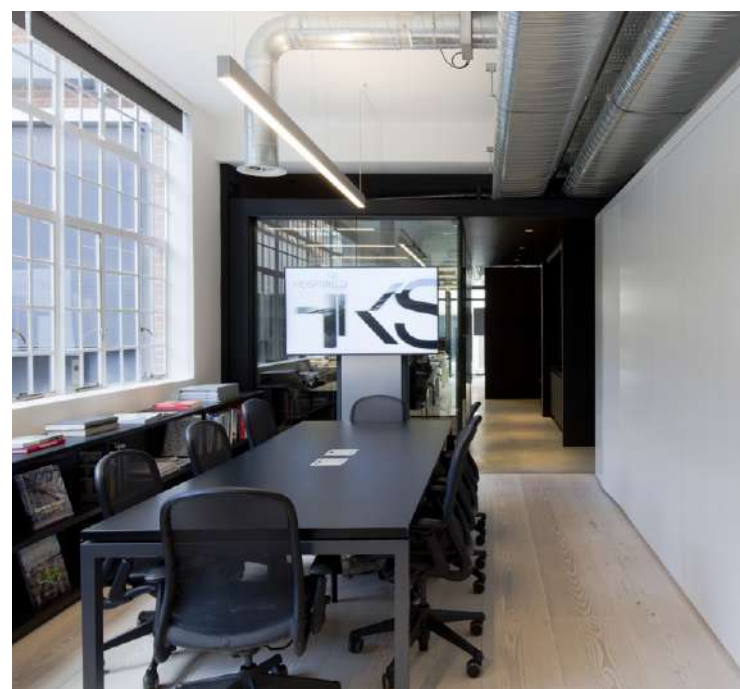
# INDUSTRIAL ARCHITECTURE AND DESIGN

## HKS Architects London

At the head office in the big city, raw industry meets nature in historic surroundings. And the bright floor in wide, solid Douglas planks must withstand a little bit of everything when the skilled architects unfold their talents.



The large open office is embraced by long wide planks.



Big decisions are best made on a solid basis, in this case softwood.

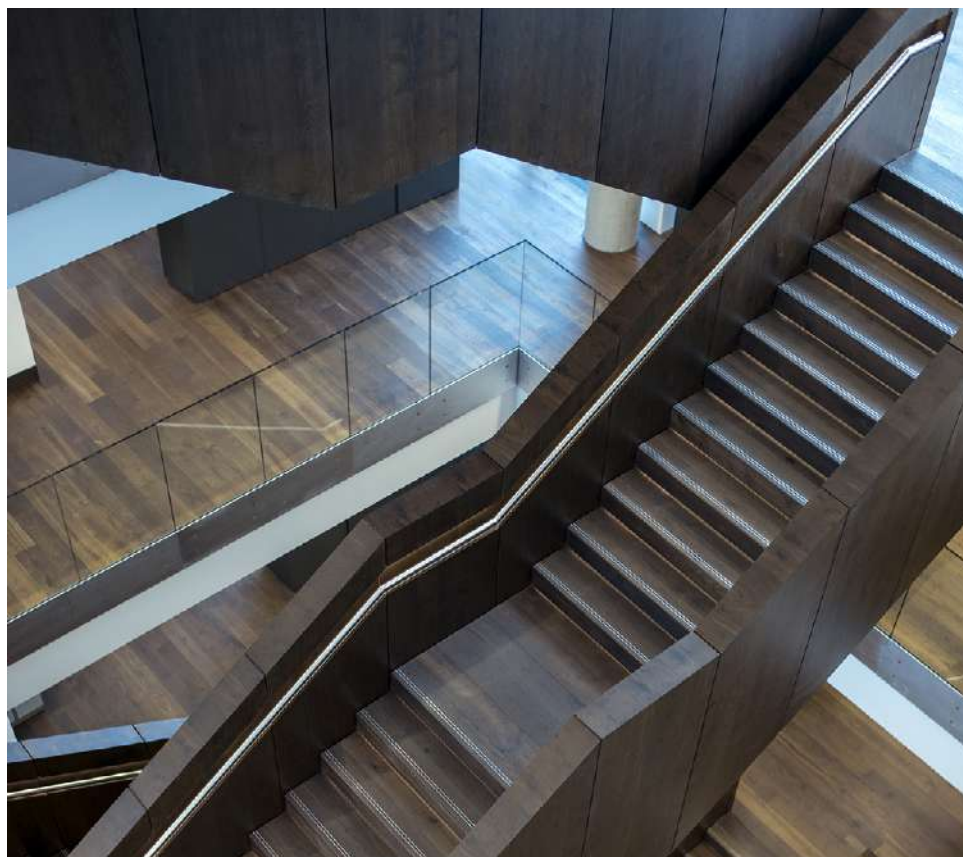


# BESPOKE SOLUTIONS

In a world of standardized products, we consider it a great privilege, when we are allowed to create a unique solution from scratch. With equal parts precision craftsmanship and creative flair, we carefully transform selected quality wood into bespoke solutions.



Solid oak planks delivered to the architectural wonder by Dorte Mandrup - The Ilulissat Icefjord Centre - in 2020.



Bespoke solid core smoked plank floor. Head office by C.F. Møller in Aarhus originally built in 2015.

Unique ships deck floor with reference to Copenhagen's naval history. Oak parquet long block with inserted black rubber joint installed at FERRING's head office designed by Foster+Partners in 2022.



PRODUCTS



Solid parquet block  
/Danish made



SHORT BLOCK / LONG BLOCK

High quality and unique processing.  
With allowances right down to 0.05 mm.

Types of pattern	Short block / Long block for laying in sequences
Types of wood	Ash / Bilinga / Beech / Doussie / Oak / Jatoba / Merbau / Smoked oak / Teak / Walnut / Wenge
Gradings	Select / Nature / Rustic
Surfaces	Untreated
Profile	Tongue/groove and sharp edges on 4 sides
Thickness	15 / 20 mm (short block) / 20 mm (long block)
Width	63 mm (long block) / 65,5 mm (short block)
Length	300-600 mm (short block) / 800-1200 mm (long block)
FSC and/or PEFC	Can be supplied on request
CE / UKCA	EN 14342
Eurofins Air Comfort Gold	Oak, ash and jatoba
EPD	Ask for our EPD declarations



PATTERN BLOCK

Anything from classic herringbone to square pattern, ladder pattern and English pattern etc.

Types of pattern	Herringbone / English pattern / Ladder pattern / Dutch pattern / Square pattern / King pattern
Types of wood	Ash / Bilinga / Beech / Doussie / Oak / Jatoba / Merbau / Smoked oak / Teak / Walnut / Wenge
Gradings	Select / Nature / Rustic
Surface	Untreated
Profile	Tongue/groove and sharp edges on 4 sides
Thickness	15 / 20 mm
Width	65,5 mm
Length	327,5 / 393 / 458,5 mm
FSC and/or PEFC	Can be supplied on request
CE / UKCA	EN 14342
Eurofins Air Comfort Gold	Oak, ash and jatoba
EPD	Ask for our EPD declarations

Solid parquet block  
/European made



SHORT BLOCK / PATTERN BLOCK

High quality short and pattern blocks made in Europe.

Types of pattern	Short block / Pattern block
Types of wood	Ash / Oak / Smoked oak
Gradings	Exquisit / Living / Country
Surfaces	Untreated / Oiled
Profile	Tongue/groove and sharp edges on 4 sides
Thickness	16 / 22 mm
Width/Length	68 x 204/272/340/408 or 70 x 350/420/500 mm
FSC and/or PEFC	Can be supplied on request
CE / UKCA	EN 14342
EPD	Ask for our EPD declarations

Solid plank



SOLID PLANK

Practically speaking, an infinite number of widths and lengths, light and dark woods, surfaces, option of rubber joints and borders in contrasting colours along walls etc.

Types of pattern	Staggered / Fixed lengths
Types of wood	Ash / Bilinga / Oak / Jatoba / Merbau / Smoked oak / Teak / Walnut, Wenge
Gradings	Exquisit / Living / Country
Surfaces	Untreated / Oiled / Varnished
Profile	Tongue/groove, micro bevel on 2/4 sides. Sharp-edged on request.
Thickness	16 / 20 mm
Width	100 / 120 / 150 / 180 mm
Length	800-2600 mm
FSC and/or PEFC	Can be supplied on request
CE / UKCA	EN 14342
Eurofins Air Comfort Gold	Oak, ash and jatoba
EPD	Ask for our EPD declarations

Castleplank®



CASTLEPLANK

Castleplank is an extraordinarily strong, slat-constructed special flooring made of carefully selected materials.

Types of pattern	Staggered / Fixed lengths
Types of wood	Ash / Douglas fir / Oak / Smoked oak
Gradings	Exquisit / Living / Country
Surfaces	Untreated / oiled and varnished on request
Wear layer	4/6 mm
Profile	Tongue/groove 4 sides, micro bevel 2/4 sides or sharp edges on request
Thickness	16 / 20 / 21 / 24 mm
Width	140 / 160 / 180 / 220 / 260 / 300 / 380 mm
Length	1200-2400 mm el. 1000-5000 mm
FSC and/or PEFC	Can be supplied on request
CE / UKCA	EN 14342
EPD	Ask for our EPD declarations

Origin plank

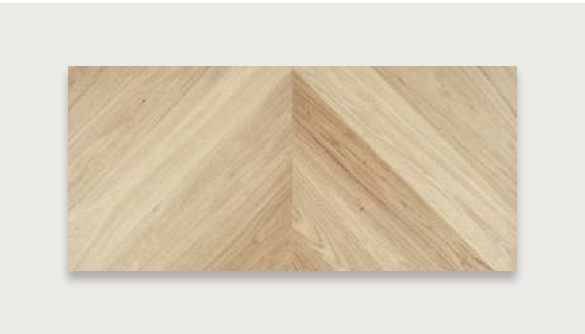


ORIGIN PLANK

Made of carefully selected timber from trees in Danish and German forests.

Types of pattern	Staggered / Fixed lengths
Types of wood	Ash / Douglas fir / Oak / Pine / Spruce
Gradings	Exquisit / Living / Country
Surfaces	Untreated
Profile	Tongue/groove, sharp edges or micro bevel
Thickness	Up to 35 mm
Width	Up to 400 mm
Length	Oak up to 12 metres / Douglas up to 16 metres
FSC and/or PEFC	Can be supplied on request
CE / UKCA	EN 14342
Eurofins Air Comfort Gold	Oak and Douglas
EPD	Ask for our EPD declarations

Chevron

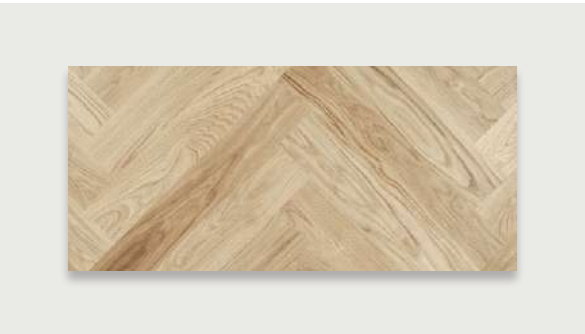


SOLID / ENGINEERED\*

The classic French herringbone floor, Chevron.

Types of pattern	Chevron
Types of wood	Oak
Gradings	Exquisit / Living / Country
Surfaces	Untreated / Oiled and varnished on request
Profile	Tonque/groove 4 sides (solid) or tonque/groove 2 sides (engineered) / Untreated (sharp edges) or Oiled (micro bevel 4 sides)
Thickness	16 / 20 mm
Width	100 / 120 / 150 mm (solid) el. 100 / 120 mm (engineered)
Length	600 / 800 / 1000 mm (solid) el. 500 / 580 mm (engineered)
FSC and/or PEFC	Can be supplied on request
CE / UKCA	EN 14342
EPD	Ask for our EPD declarations
*Wear layer	4/6 mm

Whalebone



SOLID / ENGINEERED\*

Significant dimensions and patterns – when you require something extra of your room.

Types of pattern	Whalebone
Types of wood	Oak
Gradings	Exquisit / Living / Country
Surfaces	Untreated / Oiled and varnished on request
Profile	Tonque/groove 4 sides (solid) or tonque/groove 2 sides (engineered) / Untreated (sharp edges) or Oiled (micro bevel 4 sides)
Thickness	16 / 20 mm
Width	100 / 120 / 150 mm (solid) el. 100 / 120 mm (engineered)
Length	600 / 800 / 1000 mm (solid) el. 500 / 580 mm (engineered)
FSC and/or PEFC	Can be supplied on request
CE / UKCA	EN 14342
EPD	Ask for our EPD declarations
*Wear layer	4/6 mm



Solid Line®



SOLID LINE

Solid Line comes in different types of wood and in several dimensions and can be used in all types of rooms and buildings.

Types of pattern	Fixed dimensions on sheet
Types of wood	Maple / Ash / Oak / Smoked oak / Walnut
Gradings	Object
Surfaces	Untreated / Oiled / Varnished
Profile	Tongue/groove, sharp edges on 4 sides
Thickness	10 / 15 mm
Sheet	163 x 490 mm / 245 x 490 mm
Length	490 mm
Stave width	10 / 16 / 22 mm
FSC and/or PEFC	Can be supplied on request
CE / UKCA	EN 14342
Eurofins Air Comfort Gold	Oak and ash with oil / oak with varnish
EPD	Ask for our EPD declarations

Industrial parquet



INDUSTRIAL PARQUET

A unique and elegant flooring solution which does not get worn out.

Types of pattern	Fixed dimensions on sheet assembled with tape
Types of wood	Ash / Oak / Smoked
Gradings	Unsorted
Surfaces	Untreated
Profile	Sharp edged, without tongues/grooves
Thickness	10 / 16 / 23 mm
Sheet	Approx. 160 x 320 mm
Length	160 mm
Stave width	8 mm
FSC and/or PEFC	Can be supplied on resquest
CE / UKCA	EN 14342
Eurofins Air Comfort Gold	Oak, ash and jatoba
EPD	Ask for our EPD declarations

End Grain Floor



END GRAIN FLOOR

The wood is cut against the grain. This results in an extremely durable floor, particularly recommended for spaces that are subject to heavy loads.

Types of pattern	Square or rectangular blocks cut against the grain
Types of wood	Oak / Pine / Spruce / Larch / Smoked oak / Smoked larch
Gradings	RE - home/ WE - workplaces / GE - industry / commercial
Surfaces	Untreated
Profile	Sharp edged, without tongues/grooves
Thickness	15 / 18 / 22 mm
Width	40 / 45 / 58 / 68 mm
Length	65 / 75 / 88 / 90 mm
FSC and/or PEFC	Can be supplied on request
CE / UKCA	EN 14342
EPD	Ask for our EPD declarations



END GRAIN MOSAIC

Like block flooring, end grain mosaic consists of small, square blocks that are cut against the grain.

Types of pattern	Cube pattern
Types of wood	Oak / Smoked oak
Gradings	Unsorted
Surfaces	Untreated
Profile	Sharp edged, without tongues/grooves
Thickness	10 / 18 mm
Comes on mesh	140 x 558 mm
Width	23 mm
Length	69 mm
FSC and/or PEFC	Can be supplied on request
CE / UKCA	EN 14342
EPD	Ask for our EPD declarations

Strips



STRIPS

Strips are solid staves, which are more slender than our classic solid parquet staves.

Types of pattern	Herringbone / English pattern / Parallel pattern / Cube pattern
Types of wood	Ash / Oak / Smoked oak
Gradings	Exquisit / Living
Surfaces	Untreated
Profile	Sharp edged, without tongues/grooves
Thickness	10 mm
Width	50 mm
Length	250 mm
FSC and/or PEFC	Can be supplied on request
CE / UKCA	EN 14342
Eurofins Air Comfort Gold	Oak and ash
EPD	Ask for our EPD declarations

Mosaic parquet



MOSAIC PARQUET

Small solid staves laid in one of four classic patterns, which all invest the room with a stylish, lasting look.

Types of pattern	Herringbone / English pattern / Parallel pattern / Cube pattern
Types of wood	Ash / Oak / Smoked oak
Gradings	Exquisit / Living
Surfaces	Untreated
Profile	Sharp edged, without tongues/grooves
Thickness	8 mm
Width	23 mm
Length	160 mm
FSC and/or PEFC	Can be supplied on request
CE / UKCA	EN 14342
Eurofins Air Comfort Gold	Oak and ash
EPD	Ask for our EPD declarations





## FLOORS FOR GENERATIONS

Hørning Parket A/S  
Christiansmindevej 12  
DK-8660 Skanderborg

+44 7591 067365  
sales@horningfloor.dk

Find assembly instructions  
at [horningfloor.dk](http://horningfloor.dk)



Wood is a natural resource, which is why variations in relations to specifications, photos and actual deliveries of lager areas will occur.

We reserve the right printing errors and out-of-stock dimensions in the individual product series.

All production of this printed material is CO<sub>2</sub>-compensated. The paper used has the Nordic Eco-label and made of FSC®-certified wood from Swedish or Finnish forests.

HORNINGFLOOR.DK